

richard j
harrison

Digitally signed
by richard j
harrison
Date: 2024.10.28
16:40:53 -05'00'

- ① TWO-WIRE CONTROLLER:
RAIN BIRD ESP-LXVM/PRO IN PLASTIC CABINET WITH WALL
MOUNT. INSTALL CONTROLLER AND CABINET ON WALL PER
MANUFACTURER'S RECOMMENDATIONS.
- ② JUNCTION BOX
- ③ 1-INCH CONDUIT AND FITTINGS FOR POWER SUPPLY WIRE
- ④ 2-INCH CONDUIT AND FITTINGS FOR TWO-WIRE CABLE
- ⑤ MAXIMIZABLE TWO-WIRE PATH TO FIELD DEVICES
USE A DIFFERENT CABLE JACKET COLOR FOR EACH PATH.
- ⑥ 1-INCH CONDUIT AND FITTINGS FOR GROUND WIRE, ONLY FOR
OUTDOOR INSTALLATIONS.

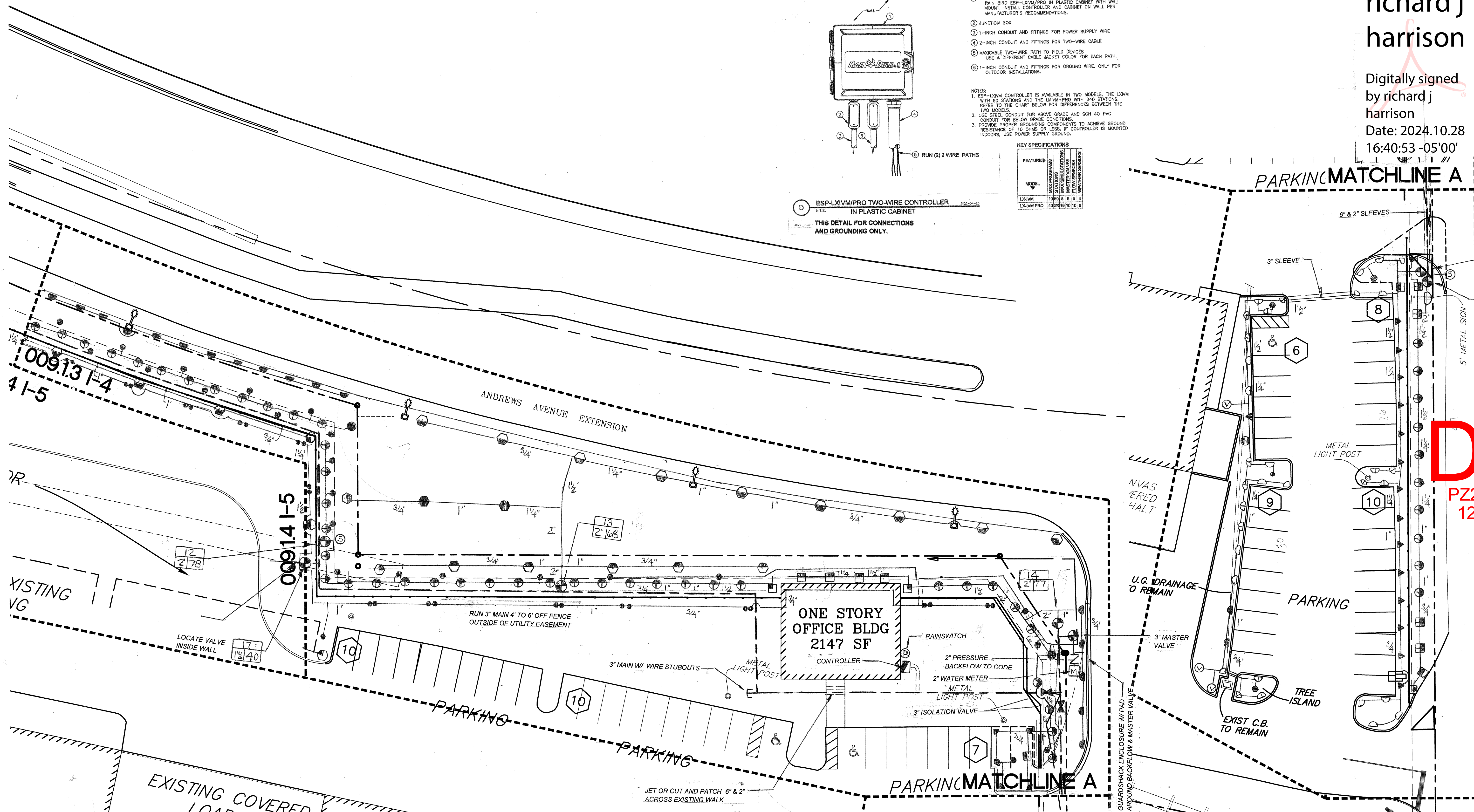
NOTES:
1. ESP-LXVM CONTROLLER IS AVAILABLE IN TWO MODELS, THE LXVM
WITH 60 STATIONS AND THE LXVM-PRO WITH 240 STATIONS.
REFER TO THE CHART BELOW FOR DIFFERENCES BETWEEN THE
TWO MODELS.

2. USE STEEL CONDUIT FOR ABOVE GRADE AND SCH 40 PVC
CONDUIT FOR BELOW GRADE CONDITIONS.

3. PROVIDE PROPER GROUNDING COMPONENTS TO ACHIEVE GROUND
RESISTANCE OF 10 OHMS OR LESS. IF CONTROLLER IS MOUNTED
INDOORS, USE POWER SUPPLY GROUND.

KEY SPECIFICATIONS	
FEATURE	MODEL
MAX PROGRAMS	LXVM 10
STATIONS	LXVM 60
MASTER VALVES	LXVM 8
FLOW SENSORS	LXVM 5
1. METER SENSORS	LXVM 1

D ESP-LXVM/PRO TWO-WIRE CONTROLLER
IN PLASTIC CABINET
THIS DETAIL FOR CONNECTIONS
AND GROUNDING ONLY.



DRC
PZ23-12000332
12/04/2024

Borsari Turn Lane

1200 NW 18th St.
Pompano Beach, FL 33069

9/26/24 CITY COMMENTS
5/22/24 City Comments
ISSUE HISTORY
PROJ NO: 23034A
PROJ MGR:
DRAWN BY:
CHECKED BY:

DRAWING TITLE:

Irrigation
Plan

SHEET:

009.13 I-4

SUBMISSION
09/26/24

NOT FOR CONSTRUCTION

